

A message from the Chair

As most residents will be aware, the district local plan was approved in late November by North East Derbyshire District Council (NEDDC), which removed the green belt status from the Westthorpe Fields and Rotherham Roads sites. Killamarsh Councillors voted against this due to the major impacts it would have on our community.

Subsequently (and unsurprisingly), the Westthorpe planning application previously submitted to NEDDC went to Planning Committee in May. I am pleased to report that the application was rejected. We anticipate that there may be either an appeal or revised planning application that could be submitted, however we will continue to fight this major impact on Killamarsh and its residents.



The Sports Centre redevelopment is still in progress, though challenges with construction supplies has caused some delays. It has been stated that the likely completion of the Sports Centre is now expected to be later in the summer. The library has temporarily closed until it moves into the revitalised Sports Centre when it opens. Due to delays in procurement for the Parish Suite refurbishment, we have now started discussions with an appointed supplier and we are awaiting the specification and pricing structure for review.

The CLOC building open day has recently taken place to gain public and user group opinions for its future use in the community. This is expected to progress once all feedback is finally received.

Finally, I hope residents enjoy the Queen's Platinum Jubilee celebration weekend from 2nd - 5th June across Killamarsh.

Steve Clough, Killamarsh Parish Council (Chair)

Westthorpe Planning Application Rejected



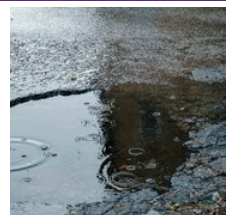
Following a decade long fight, the hard work and efforts of the Killamarsh Rage Group has led to a rejection of the recent planning application for 397 dwellings at Westthorpe. This was heard during the planning committee meeting at NEDDC on Tuesday 17th May. A plethora of objections were brought up at the meeting, delivered by members of Killamarsh Rage group, Local MP Lee Rowley, County Councillor Carolyn Renwick, Killamarsh District & Parish Councillors and many residents. Key objections were raised concerning infrastructure, environmental and archaeological impacts, sustainability and the overall challenges of the development plan on Killamarsh, amongst many others.

We are pleased to report that the application was rejected based on a number of factors including density, public transport issues, incursion on greenbelt, sustainability with regards to traffic and issues concerning the development of contaminated land.

Out of 12 voting members, 10 voted to reject the application and 2 abstained. There were no votes to support the planning application. Given the size of the development, it is likely that the application will go to appeal or possibly result in a revised application. The Council remains determined in supporting Killamarsh RAGE group and residents to fight on and prevent this huge development and the negative impacts this will have on Killamarsh. **Steve Clough, Parish Council Chair, commented 'this is the outcome we were looking for, but the fight goes on. While we recognise and support the need for more housing, the site at Westthorpe is not the place to build them and certainly not at that volume'.**

Killamarsh Road Resurfacing during 2022/23

At the February Parish Council meeting, councillors received a report from Derbyshire County Councillor Mark Foster outlining roads in Killamarsh which are due to be resurfaced in the coming year (2022/23). Approx. £368k is planned to be spent in Killamarsh over this financial year. This year will see investment in 375 roads, footpaths and pavements across the whole of Derbyshire and is the largest ever of it's kind in the county. **Cllr Mark Foster explained, "The condition of roads is one of the main issues that residents raise with Councillors. DCC are tackling this with a huge £120m investment over a 3 year plan to get the 3,500 mile road network into shape."**



Take a seat... New Benches in the Village

Two new benches have been installed in the village to replace old and dilapidated seating.

The first is at the bottom of the Memorial Gardens by the pavement on High street, replacing the original seating that had deteriorated beyond repair.



The second is at High Moor near the top of the recreation ground, providing spectacular views across to Renishaw and beyond, with more benches to come.

The Queen's Platinum Jubilee

The Queen's Platinum Jubilee celebration weekend takes place from Thursday 2nd - Sunday 5th June. As part of the celebrations, the Parish Council will be decorating some primary areas of the village with bunting.

A presentation of a commemorative leather bookmark will also be made to infants and junior schools in the village. It is hoped that this will encourage and support young peoples reading development.

The commemorative Platinum Jubilee tree is to be planted as a part of the Queen's Green Canopy later in the year.

Some funded support has been provided through the Derbyshire County Council Leadership fund.



Speeders beware...

Alongside the speed indicator sign on Lock Hill, the council is looking to obtain Speed Indicator Device signs (SIDS) to place at known risk locations around Killamarsh. A bid for funding is being submitted through the Derbyshire Police & Crime Commissioner grants so that Killamarsh can benefit from speed reduction opportunities using the equipment. This will complement the Community Speedwatch teams' activities and will help to monitor speed risks at key points across the village.



Allotment Review

The review of allotments across Killamarsh is now complete, and all available plots have now been let. However, there is still a substantial waiting list and the Parish Council is now looking at ways in which we can meet the additional requests for plots through a review of Parish Council owned land to see if there are parts that could be converted to meet resident demand.

A Taste of Summer

As we get into summer, the smell of barbecues will be in the air... So to spice things up a bit, you could give chargrilled chicken fajitas a try, which can be prepared outside on a barbecue or at the cooker top. Aldi do a BBQ Fajita dinner kit, and a ready bag of chicken fajita mix and a jar of salsa, bringing this meal for four in at just under a fiver. Easy to cook in around 15 minutes, it's a tasty tummy filler for a tidy price to suit varying tastes.

If families are looking for further grocery savings, Aldi's Super Six range is not to be sniffed at, and if you take a look in the Co-Op there are some regular freezer filler deals for just a fiver. The freezer filler deals usually incorporate a main meal and dessert to feed four.

Killamarsh Crime Figures 2022

	Jan	Feb	Mar	Total
Anti-Social Behaviour	10	12	13	35
Burglary	3	2	3	8
Criminal Damage & Arson	5	7	5	17
Drugs	1	3	1	5
Other Theft	2	1	2	5
Other Crime	1	0	0	1
Possession of Weapons	0	2	0	2
Public Order	8	2	8	18
Robbery	2	0	0	2
Shoplifting	2	1	1	4
Theft from the Person	1	0	0	1
Vehicle Crime	1	7	5	13
Violence & Sexual Behaviour	23	15	17	55
Total	59	52	55	166

2023 Parish Calendar Photography Competition

Killamarsh Parish Council are looking to produce a Parish Calendar for 2023, with any profits made set to go to a selected local charity in the new year. We are looking for 12 separate entries (one for each month of the year) consisting of any scenic landscape photos following the theme of 'out and about in Killamarsh'. Up for grabs will be 12 Max Spielmann vouchers worth £20 each (limited to one prize per household). The competition opens on 1st June with a closing date of 30th September 2022. Further details can be found at www.killamarsh-pc.gov.uk.

Something for the Younger Folks....

Aimed at the young people of Killamarsh to engage and entertain, the Parish Council has employed the services of the Extreme Wheels team. It has been nearly a decade since Extreme Wheels served Killamarsh and we're happy to see it return for the benefit of the next generation. Additional funded support has been provided by the Derbyshire County Council Leadership Fund to deliver the programme.



EXW

EXTREME WHEELS ROADSHOWS

KILLAMARSH

Where: **Killamarsh Skatepark**

When: **Every Wednesday** Time: **6pm to 8pm**

**FREE
JUST TURN UP!**

Sessions will include one of the following:

- **Skatepark** • **Laser Tag** • **Body Zorbing**

IMPORTANT

✓ These sessions are provided for local young people from the communities listed above ✓ Sessions are delivered as drop-in activities: young people can come and go throughout the session ✓ Minimum age 9 years and older for Extreme Wheels activities only ✓ Helmets must be worn at all times

Bolsover
District Council



'EXTREME WHEELS ROADSHOWS'

extreme.wheels@bolsover.gov.uk | 01246 593041

22-687

In partnership with:

Killamarsh Parish Council

Your Parish, District* & County Councillors

East Ward

Cllr Nick Challenger (Vice Chair)	07970 718056
Cllr David Drabble*	07583 413859
Cllr Tony Lacey*	0114 2482587
Cllr Wendy Tinley	07464 965882
Cllr Eva Thompson	0114 2473932
Cllr John Windle	07988 506755

West Ward

Cllr Brian Clamp	organiser2122@hotmail.com
Cllr Steve Clough* (Chair)	07828 211725
Cllr Chris Curzon	0114 2514119
Cllr Susan Jackson	susan.jackson89@gmail.com
Cllr Carol Lacey	0114 2482587
Cllr Alex Platts*	07522 773736
Cllr Mo Potts*	mpottskc@gmail.com
Cllr Bill Rice	0114 2481744

County

Mark Foster	07803 902698
Carolyn Renwick	07711 765124

Is your organisation in the Parish Council Directory?

Businesses, local services and community groups can all register their details on the Parish Council website directory for free.

Why not take the opportunity of free advertising and improve your website rankings by having a link from our gov.uk website... See: <https://www.killamarsh-pc.gov.uk/findmynearest>.

Newsletter Feedback

If you would like to:

Ask any questions or raise any issues relating to the village

Advertise your group or trade

Suggest any news articles which would be of interest to the Community

Please contact the Parish Office Team on 0114 247 2260 or email parish.office@killamarsh-pc.gov.uk.